



Rocky Mountain Farmers Union Foundation

## **Second Century Fund**

Plant Your Legacy

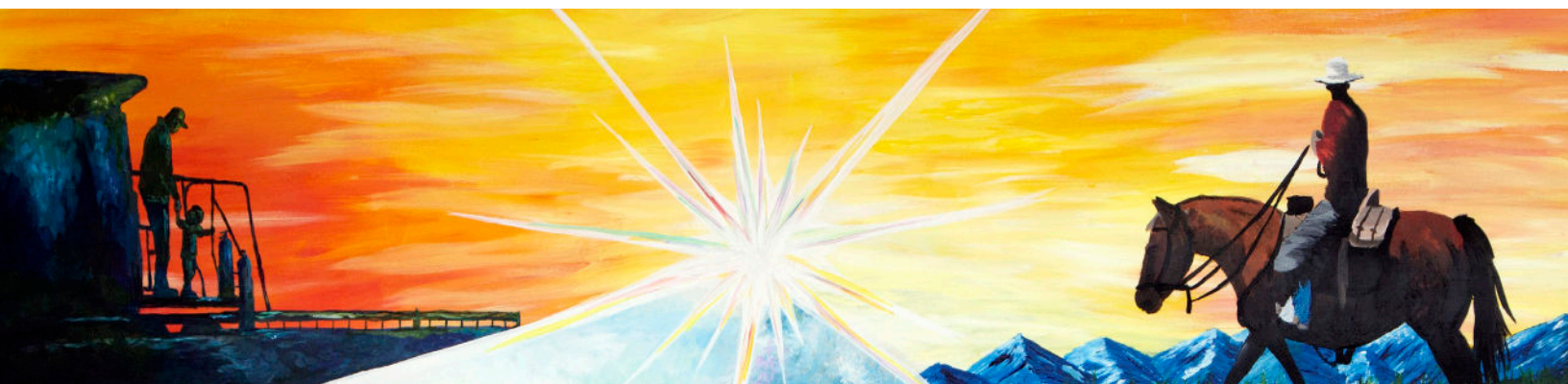
### ***Invest in Rocky Mountain Farmers Union's next century of success***

For over 100 years, Rocky Mountain Farmers Union has enjoyed success a leadership development and agricultural advocacy organization. With more than 15,000 family members today, the reach of RMFU is vast in our three-state region and has benefited farm and ranch families and rural communities in **meaningful ways**.

That would not have been possible without you. As **notable leaders** in RMFU, you are the movers and shakers that others look to for guidance, advice, and action.

**With your help**, we can continue to serve our members and preserve the agricultural way of life for the next 100 years.

**Now is the time to join us in planting your legacy within Rocky Mountain Farmers Union.**



## **What is the RMFU Foundation?**

The **Rocky Mountain Farmers Union Educational and Charitable Foundation** is a nonprofit 501-C(3) entity whose mission is to foster activities that strengthen rural economies through its agricultural producers, families, and their communities. Through efforts in education and cooperation, the Foundation invests in current and future agricultural leaders.

Where you see the RMFU Foundation:

### ***RMFU Cooperative Development Center:***

Provides technical, financial, and educational assistance for new and existing cooperative businesses and projects.

### ***Education:***

Leadership camps, adult workshop programs, and community initiatives that educate producers and consumers.

### ***Special Projects:***

Developing organizations that serve the agricultural community such as AgWell and Drought Advisors.

## **Why we partnered with the Denver Foundation**

The Denver Foundation is a tax-exempt, nonprofit, philanthropic organization, that stewards more than 1,000 funds established by generous donors. We have partnered with The Denver Foundation as they are able to manage and place the funds in an investment pool where it will likely receive significantly greater returns than if the Endowment's funds were invested alone.

Your tax-deductible donation to the Second Century Fund not only invests in the future of agriculture but also allows you to inspire and influence the next generation of agriculturalists.

**Planting your legacy means investing part of yourself in sustaining and growing the best of Rocky Mountain Farmers Union. Your foundation seed will form the Second Century Fund.**



# RMFU Foundation 10-Year Impact

132 Fellows

\$64,000 in Scholarships

Over 1,850 youth camp participants

Four Women's Conference attendees sponsored annually

60 students sent to the Annual College Conference on Cooperatives

Over 490 Cooperative Development Center supported groups and individuals

## Why give to the Second Century Fund?

The Second Century Fund is an endowment ensuring that the next 100 years of RMFU will continue to educate future generations of agriculturalists and community leaders.



*Invests in youth educational opportunities such as summer camps, scholarships, and college conferences*



*Supports the Fellows Program including leadership and professional development to create leaders for local communities*



*Create and maintain special projects to meet specific needs in our agricultural communities*

*Ensures the continuation of our support of family farming and ranching*

## WHAT DOES DONATING DO FOR YOU?

*A chance to shape the next 100 years of RMFU*

*An investment in your faith for the future of agriculture*

*Recognition as agricultural trailblazers in publications and at events*

## **Levels of Giving:** *(minimum listed)*

Foundation Seed: \$100

Oak Leaf: \$1,000

Plow: \$5,000

Rake: \$10,000

Hoe: \$25,000

Oak Tree: \$50,000

Farmers Union Triangle: \$100,000

*Your level of recognition as a donor will vary depending on which level you give at. There are opportunities within the Second Century Fund to give your donation to specific programs, such as scholarships and camps, or to give to the general fund, where our directors will carefully discern where the funds will be used.*

*Donors can give gifts over the course of years and be acknowledged upon commitment.*

Donors may support the Endowment with contributions of cash, securities, real estate or personal property, or they can give later through life insurance or bequests through wills and trusts.

Through your donation, we can continue to be the voice of family farmers and ranchers throughout Wyoming, Colorado, New Mexico, and beyond. We will continue educating and forming the next generation of agricultural leaders. And we will further invest in our agricultural communities and cooperatives.

**Join us, plant your legacy, and continue to transform the lives of farmers and ranchers just like yours.**

Please contact Jennifer Luitjens Bahr, Director of the Rocky Mountain Farmers Union Foundation at [jennifer.bahr@rmfu.org](mailto:jennifer.bahr@rmfu.org) or 303-283-3550.

